

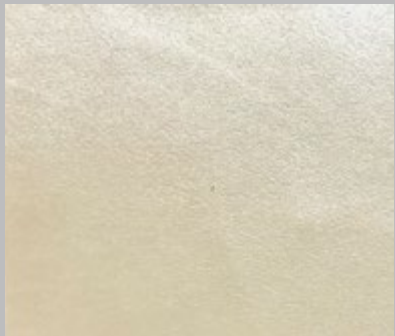


ORO[®]

IRIDESCENT FINISH



COLORTEK[®]



350/75 - Sergine
Base 135-7



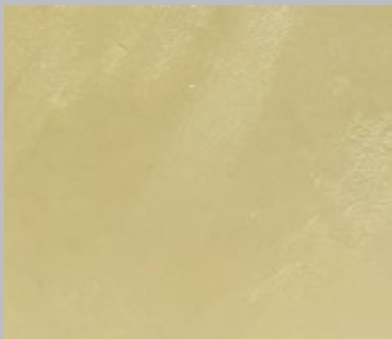
350/76 - Froissé
Base 135-7



350/77 - Trame
Base 135-7



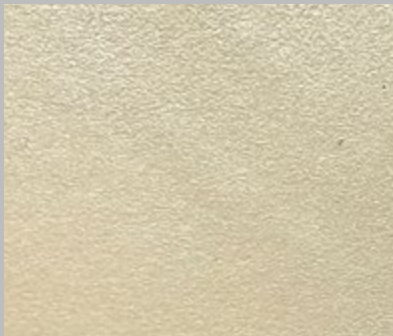
350/72 - Panama
Base 135-7



350/73 - Nid
Base 135-7



350/74 - Dentelle
Base 135-7



350/78 - Satin
Base 128-1



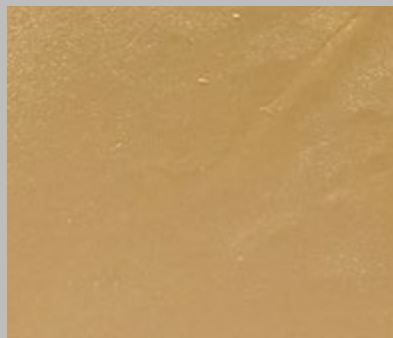
350/79 - Percale
Base 128-1



350/80 - Lamé
Base 128-1



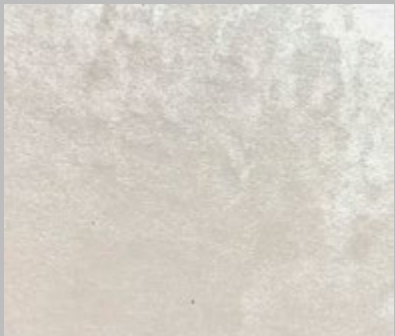
350/81 - Cretonne
Base 125-7



350/82 - Velvet
Base 125-7



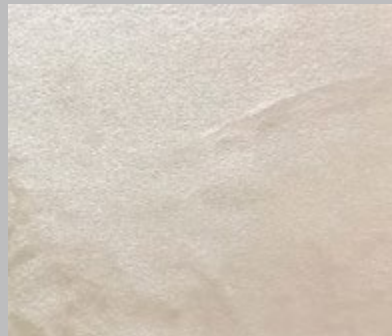
350/83 - Jute
Base 125-7



350/00 - Linen
Base White



350/01 - Alépine
Base 34-1



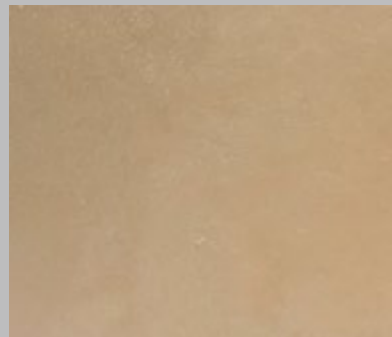
350/02 - Coton
Base 34-1



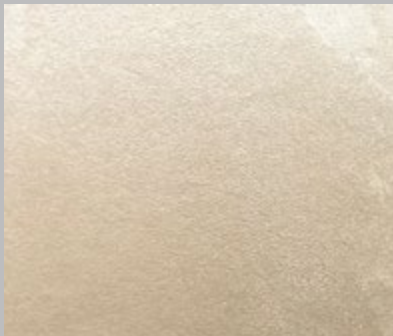
350/03 - Toile
Base 39-2



350/04 - Soie
Base 39-2



350/05 - Croisé
Base 39-2



350/06 - Tricot
Base 149-6



350/07 - Laine
Base 149-6



350/08 - Cadès
Base 149-6



350/09 - Barège
Base 125-1



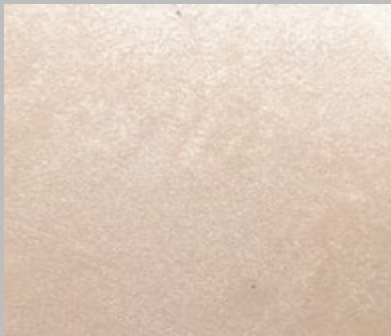
350/10 - Tulle
Base 125-1



350/11 - Jacquard
Base 125-1



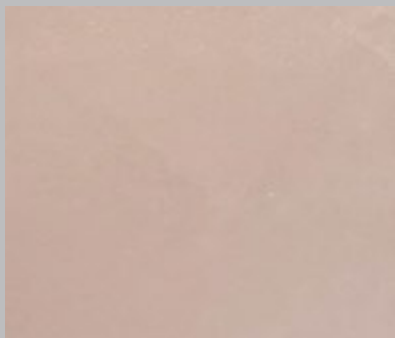
350/12 - Frappé
Base 8-1



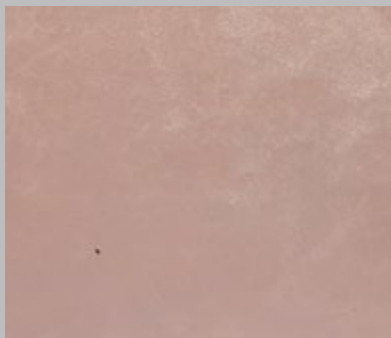
350/13 - Chiffon
Base 8-1



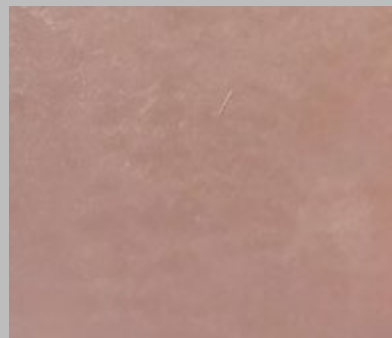
350/14 - Moire
Base 8-1



350/15 - Lin
Base 38-2



350/16 - Frisé
Base 38-2



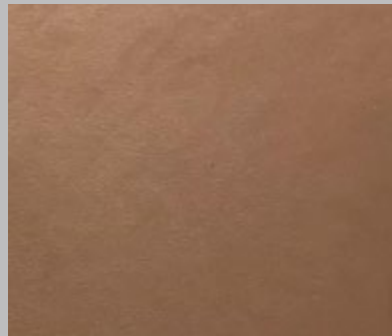
350/17 - Organdi
Base 38-2



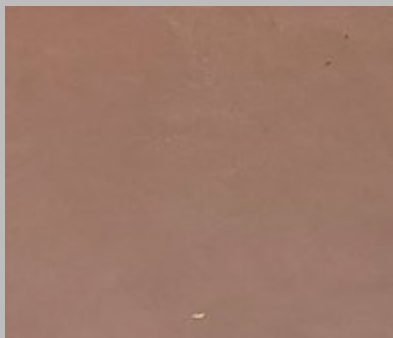
350/18 - Pilou
Base 38-3



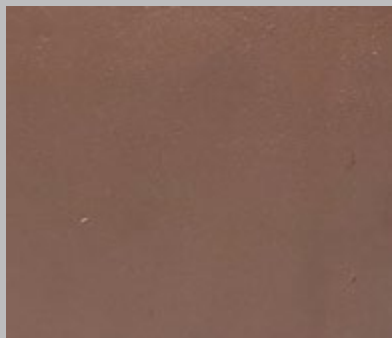
350/19 - Cuir
Base 38-3



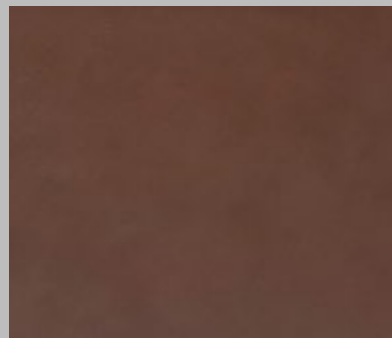
350/20 - Vichy
Base 38-3



350/21 - Piqué
Base 38-3



350/22 - Japon
Base 38-3



350/23 - Acca
Base 38-3



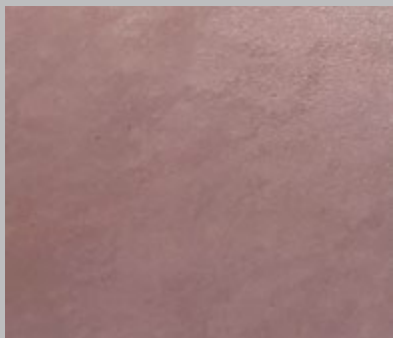
350/24 - Quadrillé
Base 118-1



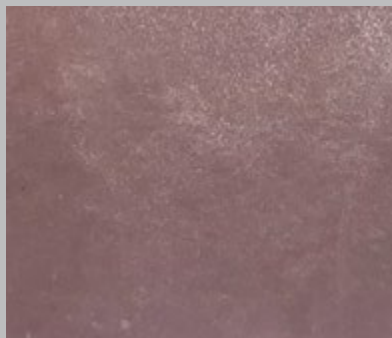
350/25 - Tabis
Base 118-1



350/26 - Tapa
Base 118-1



350/27 - Etamine
Base 117-7



350/28 - Pékiné
Base 117-7



350/29 - Régence
Base 117-7



350/84 - Cloqué
Base 117-7



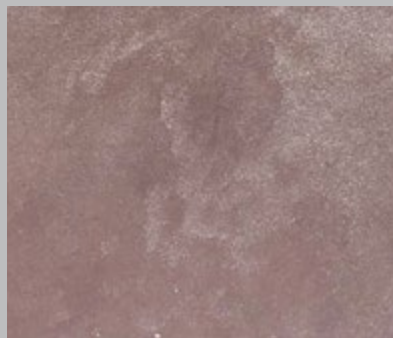
350/85 - Bogolan
Base 117-7



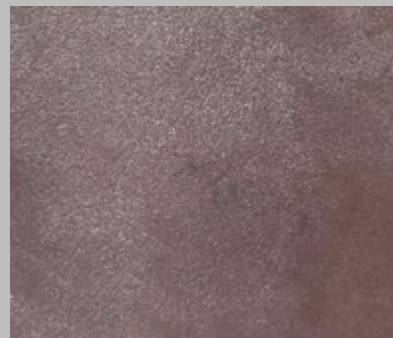
350/86 - Fil
Base 117-7



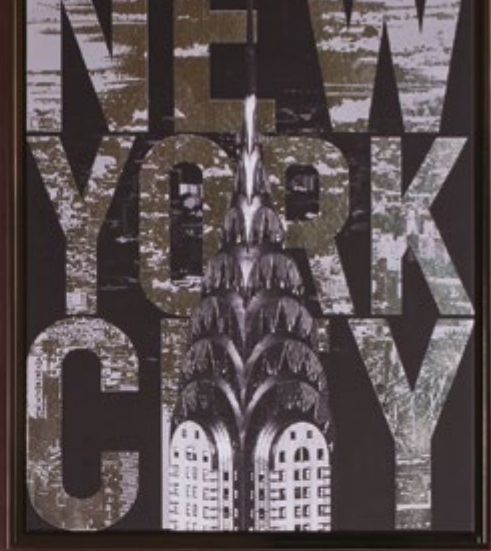
350/87 - Velour
Base 117-7



350/88 - Angora
Base 117-7



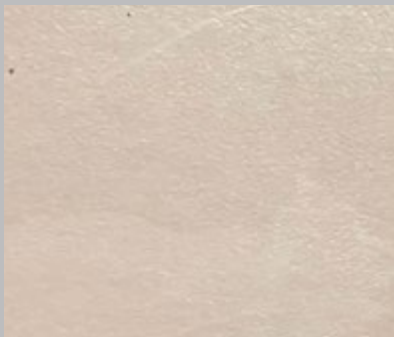
350/89 - Royale
Base 117-7



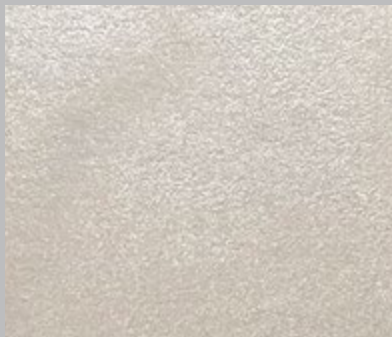


350/86 - Fil
Base 117-7

Oro Effect



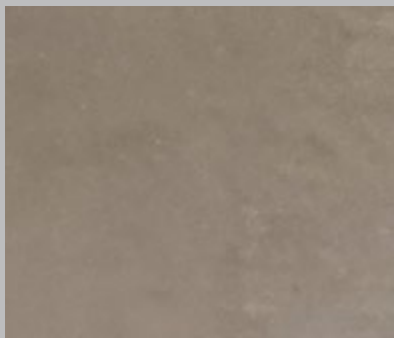
350/36 - Plumetis
Base 33-2



350/37 - Molleton
Base 33-2



350/38 - Natte
Base 33-2



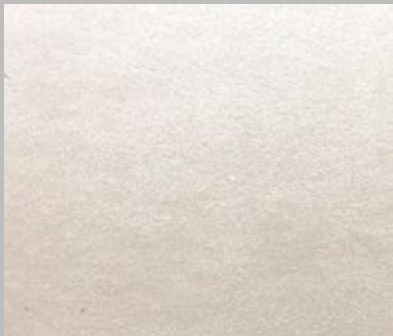
350/39 - Reps
Base 126-2



350/40 - Ninon
Base 126-2



350/41 - Faille
Base 126-2



350/42 - Lustrine
Base 149-1



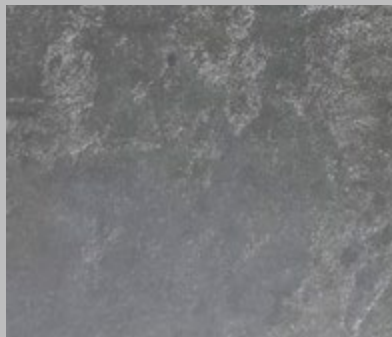
350/43 - Métis
Base 149-1



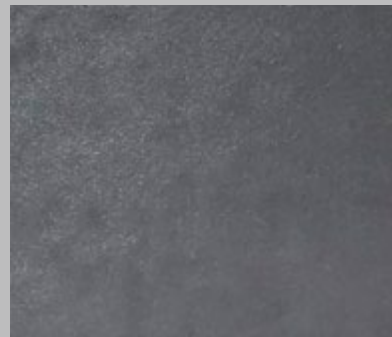
350/44 - Crin
Base 149-1



350/45 - Calle
Base 143-6



350/46 - Bure
Base 143-6



350/47 - Caban
Base 143-6





350/96 - Whipcord
Base 146-1

Oro Tin Effect



350/48 - Impériale
Base 145-1



350/49 - Éolienne
Base 145-1



350/50 - Mohair
Base 145-1



350/51 - Tussor
Base 144-1



350/52 - Coutil
Base 144-1



350/53 - Droguet
Base 144-1



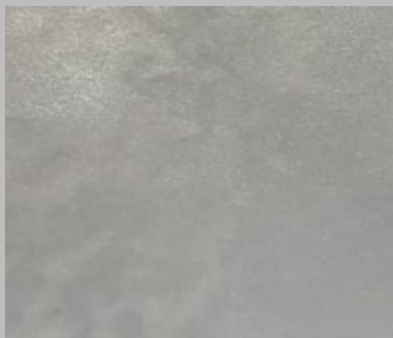
350/54 - Épinglé
Base 144-2



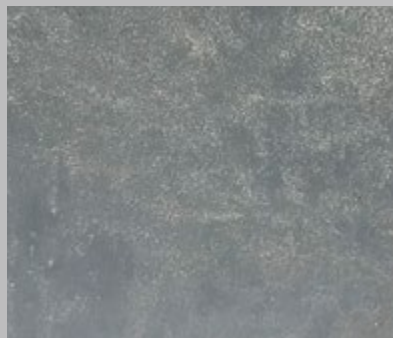
350/55 - Rayon
Base 144-2



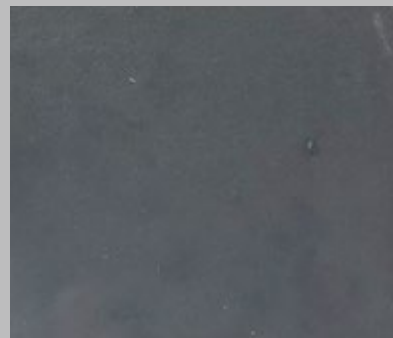
350/56 - Denim
Base 144-2



350/57 - Façonné
Base 146-6



350/58 - Tweed
Base 146-6



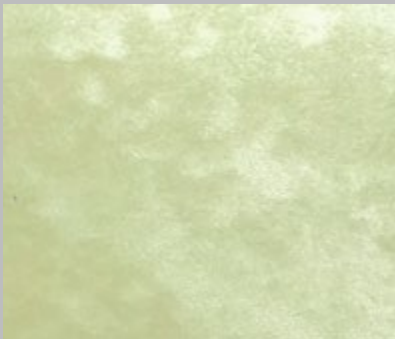
350/59 - Jeans
Base 146-6





350/59 - Jeans
Base 146-6

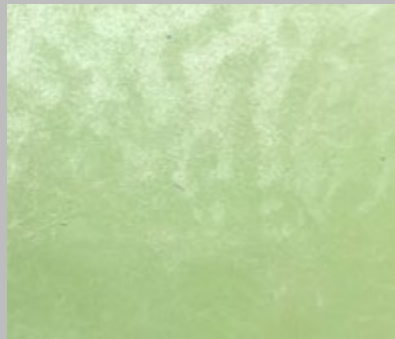
Oro Dragged Effect



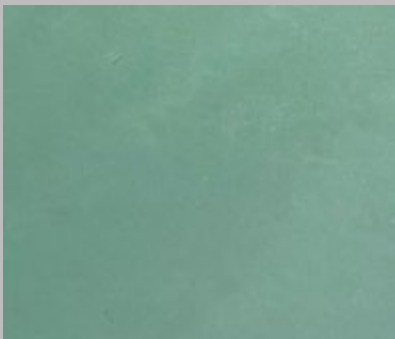
350/63 - Twill
Base 103-7



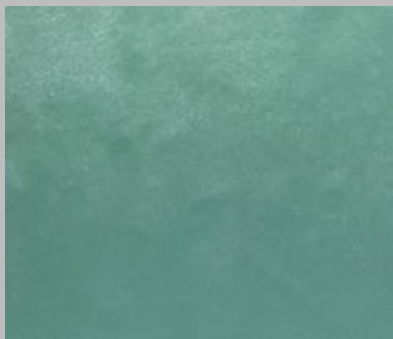
350/64 - Taffetas
Base 104-1



350/65 - Chanvre
Base 104-1



350/60 - Écossais
Base 105-1



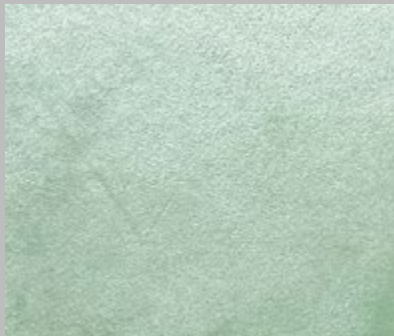
350/61 - Minky
Base 105-1



350/62 - Brocart
Base 105-1



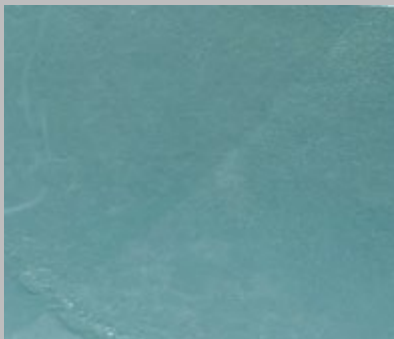
350/69 - Wax
Base 105-7



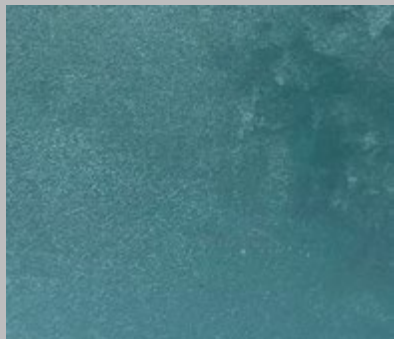
350/70 - Pongé
Base 105-7



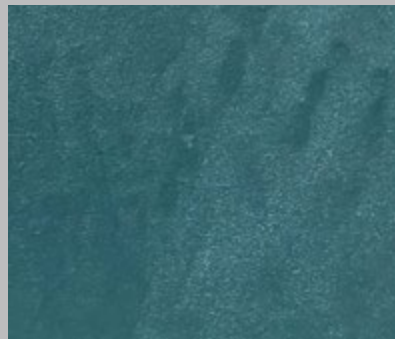
350/71 - Cameleon
Base 105-7



350/66 - Bchette
Base 110-1



350/67 - Batiste
Base 110-1



350/68 - Batik
Base 110-1



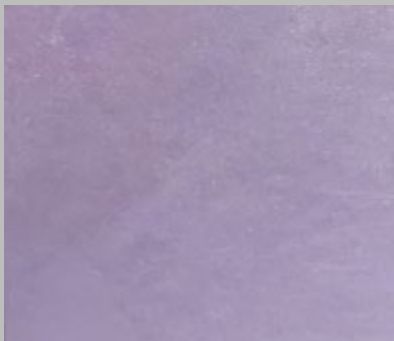
350/30 - Gaze
Base 78-6



350/31 - Tissue
Base 78-6



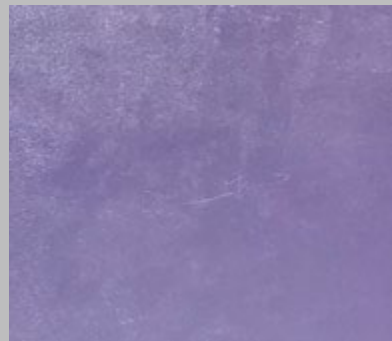
350/32 - Organza
Base 78-6



350/33 - Raphia
Base 117-7



350/34 - Popeline
Base 117-7



350/35 - Madras
Base 117-7



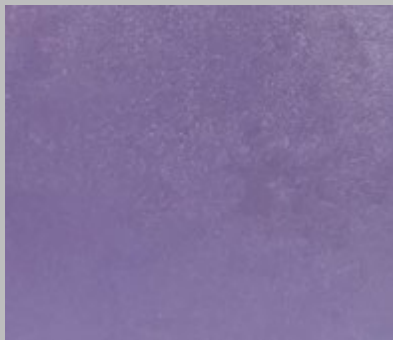
350/90 - Ancélia
Base 117-1



350/91 - Côtelé
Base 117-2



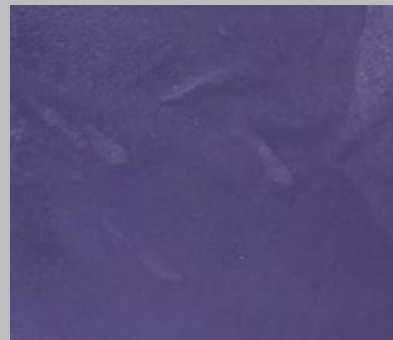
350/92 - Calicot
Base 117-2



350/93 - Chintz
Base 117-7



350/94 - Kelsch
Base 117-6



350/95 - Drap
Base 117-5

ENG Oro®

Oro® is a decorative coating with a special lustrous silky finish, perfect for creating classic or modern atmospheres depending on the application technique used.

Technical Name

Iridescent effect.

Key Properties

- Unleaded
- Water based
- Washable (after full curing)
- Enhanced resistance to flame spread
- Odorless
- 1 attractive base color (350)
- Very low VOC content in compliance with:
 - EU directive 2010/79/EU
 - French decree No: 2011-321

Pack Size

- 1 US Quart - (1 kg)
- 1 US Gallon - (4 kg)

Recommended Uses

Interior application.

Type of Substrate

Plaster, embossed wall coverings, gypsum board, concrete, cement rendering, brick work.



Finish

Velvet metallic finish.

Coverage

4-5 m² per kg.

Drying Time

1/2 to 1 hour depending on temperature and humidity.

Thinner

No thinning required.

Preparation

All surfaces to be painted should be clean, dry and free from loose and flaking material. Rub down and rinse. Prime the substrate with the appropriate COLORTEK® CO.ACRYL or C1 Family.

Instructions

Stir well, apply Oro® in an irregular manner, using an inox trowel until the surface is fully covered. Before the product dries, pass back over the surface by troweling it backwards and forwards in random direction to achieve the velvet effect. After full dry, apply a second coat in the same manner.

Do not apply at temperatures below 5°C or when rain is expected.



Recommendation

To obtain the optimum Oro® finish and bring out the special metallic finish in this product, proper lighting should be directed to the designed wall.

Cleaning

Remove as much product as possible from application equipment before cleaning. Clean equipment immediately after use with warm soapy water and rinse thoroughly.

Do not empty product into drains or watercourses.

Additional Info

Product batches are tested using a quality control system and are ISO 9001:2008 certified.

Transportation & Storage

Care should be taken to avoid spillage. Protect from frost and humidity.

CODING SYSTEM

Color reference

Color name

350/66 - Bachette
Base 110-1

Background color

FR Oro®

Oro® est une finition décorative ayant un aspect soyeux et souple au toucher qui se caractérise par des effets irisés.

Nom Technique

Effet irisé.

Propriétés

- Ne contient pas de plomb
- Produit en base eau
- Lavable
- Résiste à la chaleur
- Inodore
- 1 base (350)
- Faible teneur en COV conformément aux:
 - Directive EU directive 2010/79/EU
 - Decret Français No: 2011-321

Emballage

- 1 US Quart - (1 kg)
- 1 US Gallon - (4 kg)

Usage Recommandé

Application en intérieur.

Types de Support

Enduit, ciment, plâtre et plaque de plâtre, anciennes peintures usuelles absorbantes, etc.

Finition

Finition en velours métallisé.



Rendement

4 à 5 m² par kg.

Temps de Séchage

Environ 1/2 à 1 heure en fonction des conditions climatiques et de la température ambiante.

Diluant

Aucune dilution requise.

Préparation du Support

Le support doit être dur, propre, sain, sec, cohésif et libre de toute matière telle que salpêtre, mousse, lichen ou autres microorganismes pouvant empêcher l'adhérence du produit sur le support. Dans un premier temps, appliquez la couleur appropriée de la sous-couche COLORTEK® CO.ACRYL ou Famille C1.

Application

Oro® est un produit prêt à l'emploi qui s'applique en deux couches à l'aide d'une taloche en inox en effectuant avec l'outil des rotations en directions opposées et aléatoires afin d'obtenir une finition velours à deux tons. Une fois la première couche ayant séchée, appliquer une seconde couche.

Ne pas appliquer à une température ambiante inférieure à 5°C ou par temps pluvieux.



Recommandation

Il est recommandé d'installer un système d'illumination approprié afin de mettre en valeur les cristaux et l'effet d'Oro®.

Nettoyage des Outils

Éliminer autant que possible le reste du produit de la surface des outils. Nettoyer ces derniers en les frottant vigoureusement avec de l'eau et du savon.

Ne pas vider les restes du produit dans égouts ou les voies d'eau.

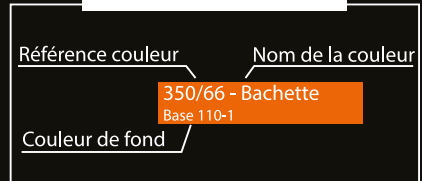
Information Additionnelle

Le processus de fabrication est soumis au plus stricts contrôles de qualité certifiés conformes au standard ISO 9001:2008.

Transport et Stockage

Stockez le produit à l'abri de l'humidité et des températures de gel.

SYSTÈME DE CODAGE





COLORTEK[®]

Product designed in the EU

www.colortek.eu
info@colortek.eu



**Synergy, Added Value, Continuous Improvement,
Diversity, Integrity, Social Responsibility.**