



COLORTEK®

**VENATTA®
MARBLE FINISH**

Wall to Floor
Marble Decorative Finish



VENATTA® MARBLE SPLENDOR

Venatta is a decorative coating used to create, wall to floor, multi-layered and textured stone finishes.

Combined with our decorative paints, metallic glazes and protective top coats, Venatta provides limitless possibilities when it comes to designing sophisticated, stunning interiors.

Disclaimer: Due to printing technologies specifications, actual colors may vary from those displayed in this catalog.

www.colortek.eu

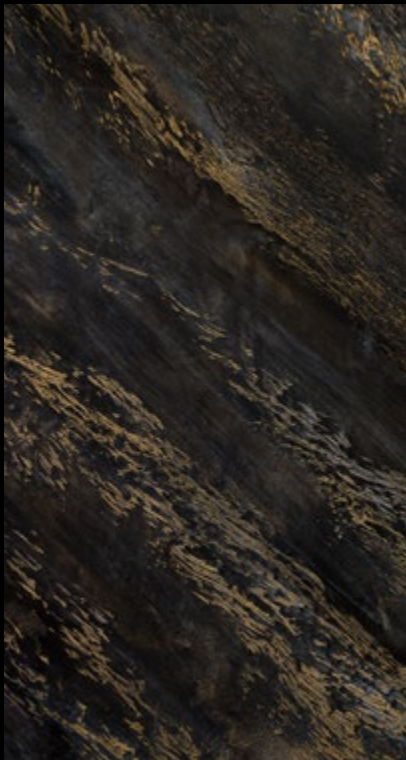
Venatta, Colortek, Wall & Floor Fashion and the Colortek Drop Symbol are registered trademarks.

© 2018





ONYX VOLCANO



APPLICATION STEPS

C1A R10
Metallo Roman Silver
Deco Additive 7

ONYX TERRACOTA



APPLICATION STEPS

C1A R10
Deco Additive 7
Metallo Copper
Metallo Roman Silver
Scumble + Dark Crack Medium

ONYX GOLD



APPLICATION STEPS

Baca 510/69
Deco Additive 7
Dark Crack Medium

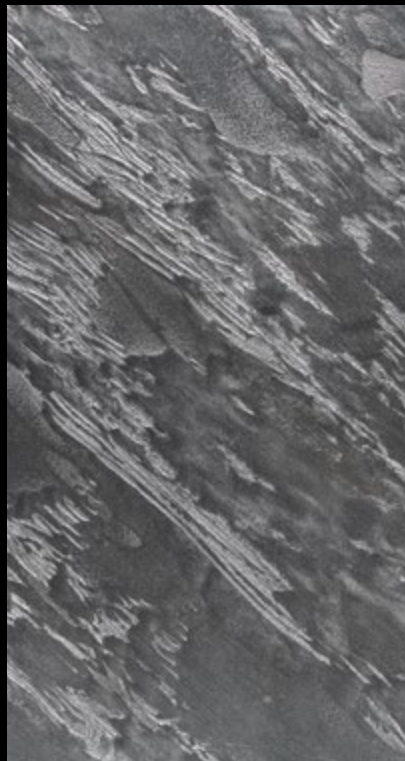
ONYX BLACK



APPLICATION STEPS

C1A R10
Deco Additive 6

ONYX SILVER



APPLICATION STEPS

C1A R10
Metallo Roman Silver (NT=2 / Quart)
Deco Additive 6

ONYX CLOUDY RED



APPLICATION STEPS

C1A R10
Metallo Roman Silver (NT=25 / Quart)
Deco Additive 6
Deco Additive 8



APPLICATION STEPS

C1A R10
Fusion Green (GF=3/KG)



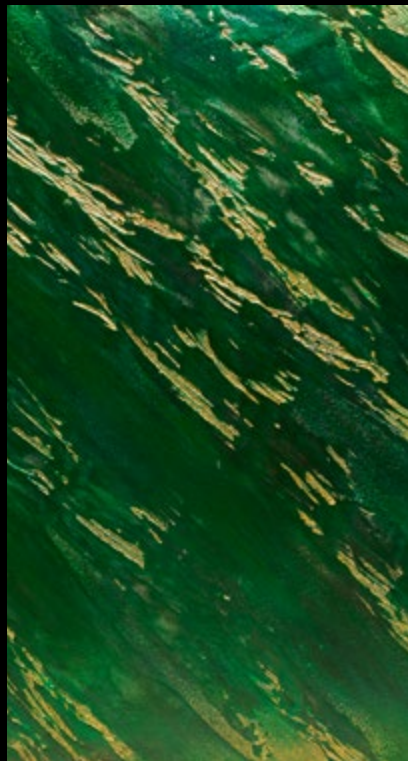
FOREST AMETISTA



APPLICATION STEPS

C1A R10
Metallo Violet
Deco Additive 6

FOREST JADE



APPLICATION STEPS

C1A R10
Fusion Green
Deco Additive 7

FOREST LAKE



APPLICATION STEPS

C1A R10
Metallo Roman Silver*
Deco Additive 6

* BC 90 ; VB 40; NT 1; RD 2 / Quart



SAFARI HUESO



APPLICATION STEPS

Coacryl 275
Deco Additive 6
Scumble (NT = 25)

SAFARI SAMBA



APPLICATION STEPS

Coacryl 275
Deco Additive 6
Metallo Roman Silver
Metallo Copper
Scumble + Dark Crack Medium

SAFARI NATAL



APPLICATION STEPS

Coacryl 275
Deco Additive 6
Dark Crack Medium

SAFARI ARENA



APPLICATION STEPS

Metallo Flash Gold

SAFARI MOSTAZA



APPLICATION STEPS

Coacryl 37.1
Deco Additive 7
Scumble + Dark Crack Medium

SAFARI NARANJA



APPLICATION STEPS

Metallo Roman Silver
Deco Additive 7
Scumble + Walnut

BOTTEGA MARFIL



APPLICATION STEPS

Metallo Roman Silver
 Metallo Copper + Classic Color
 Deco Additive 6
 Dark Crack Medium

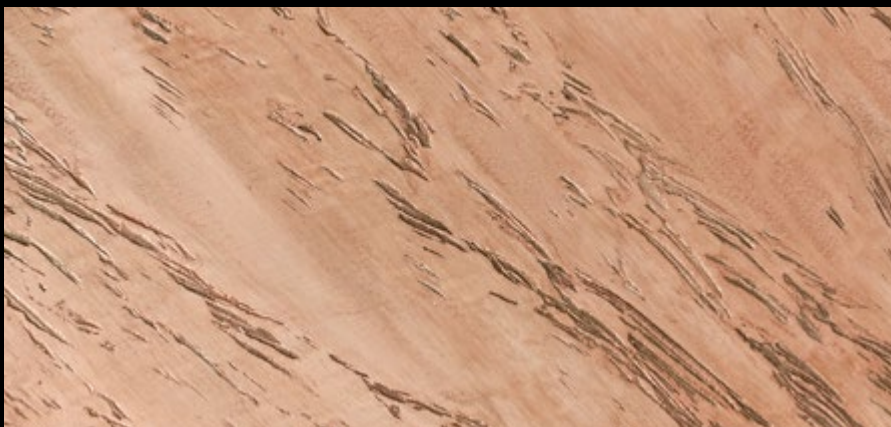
BOTTEGA CÁLIDO



APPLICATION STEPS

Metallo Roman Silver
 Metallo Copper
 Dark Crack Medium

BOTTEGA CALIZA



APPLICATION STEPS

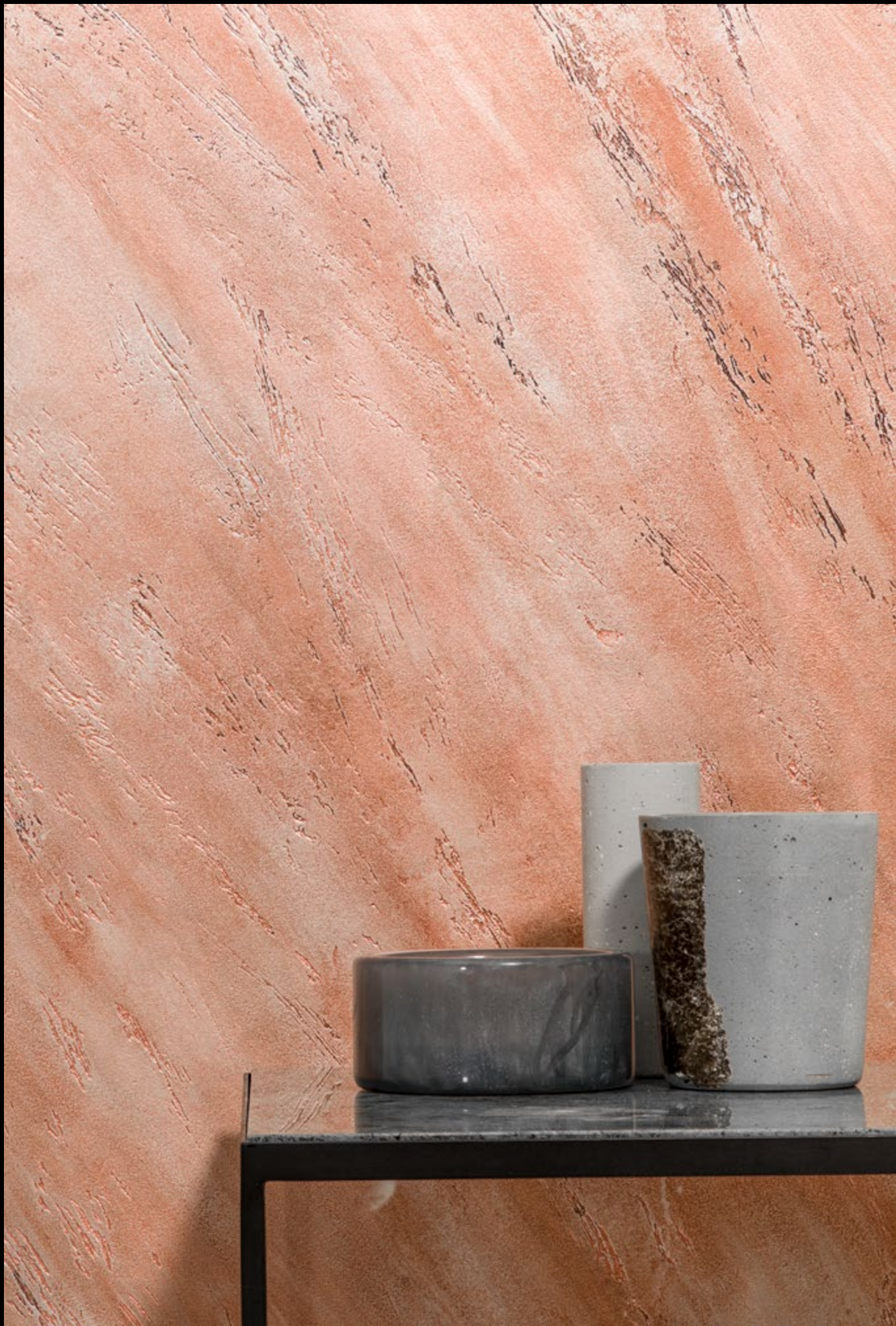
Metallo Roman Silver
 Metallo Copper
 Scumble (NT = 25)

BOTTEGA TOPO



APPLICATION STEPS

Metallo Roman Silver
 Metallo Copper
 Deco Additive 7
 Dark Crack Medium





DAKOTA RIO BLANCO



APPLICATION STEPS

C1A White
Metallo Roman Silver
Deco Additive 6

DAKOTA KASHMIR



APPLICATION STEPS

Metallo Roman Silver
Deco Additive 6
Dark Crack Medium

DAKOTA SOMBRA



APPLICATION STEPS

C1A White
Deco Additive 8

DAKOTA ROSSO



APPLICATION STEPS

C1A White
Metallo Copper
Metallo Roman Silver
Dark Crack Medium

DAKOTA SOMBRA BLANCA



APPLICATION STEPS

C1A White
Metallo Roman Silver
Scumble (NT = 25)
Coacryl White

DAKOTA TUNDRA



APPLICATION STEPS

C1A R96
C1C White
Coacryl IT 169-2

VENATTA® TECHNICAL INFORMATION

Technical information and application instructions.

For a visual reference on the application steps , please refer to our application video available on YouTube

<https://youtu.be/PlhVSxRVqXY>

www.colortek.eu

Venatta, Colortek, Wall & Floor Fashion and the Colortek Drop Symbol are registered trademarks.

© 2018



VENATTA® WALL APPLICATION



1. PRIMING

On absorbent substrates, apply Colortek Fondo F on the properly primed and clean substrate.

On non-absorbent substrates such as glazed tiles, use Colortek Neogrip after slightly sanding the surface. Large tile joints should be removed and treated with our epoxy joint filler and surface repair putty, Colortek SX2 FillWell.

2. VENATTA APPLICATION

Apply the first coat of Venatta with an inox trowel and leave the surface to dry.

Apply a second coat of Venatta and while the coat is still wet, create the Marble stone veins in the surface using tool REF. 793 – 49503.

Once the pattern is created, leave the surface to dry to approximately 60% before going over it with an inox trowel used to press and smoothen the marble pattern.

If you feel the surface has dried while ironing the surface, you can spray water mist to dampen the substrate.

Once this step has concluded, leave the surface to dry.

3. STAINING

Choose your main marble stone color and tint either Colortek C1A or C1C to paint over the Venatta surface. This will set the main color of the final effect. For dark marble finishes, you can use Colortek C1A R10. You can also opt to use some of our decorative paints as the effect's main base. For instance, you can use Colortek Fusion, Baca, etc.

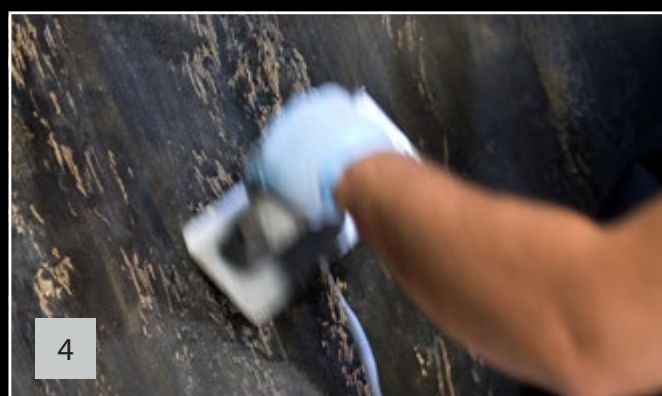
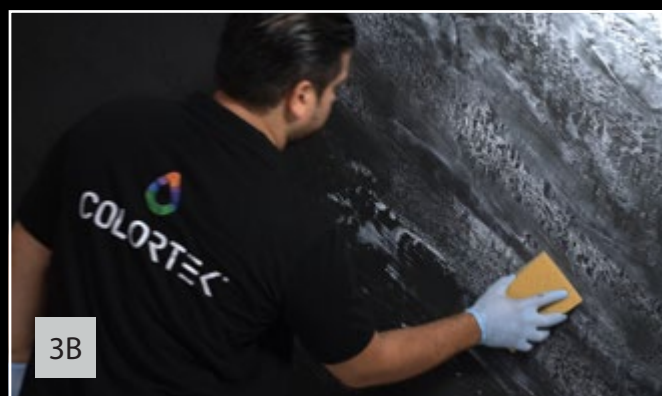
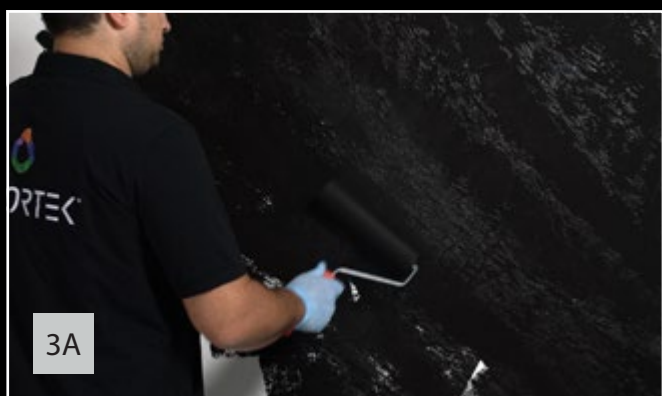
For a more dramatic metallic effect, apply Colortek Metallo over the surface and leave surface to dry.

For richer marble veins, use one of the Colortek metallic additives and paint with a brush, going over the marble veins to create a duo tone effect. Clean any excess material with a wet sponge and Leave the surface to dry.

4. PROTECTIVE TOP COAT

When a slightly reflective finish is desired or when Venatta is used in wet areas such as bathrooms, you can apply Colortek Carrolux on the surface as a final protective coat.





VENATTA® FLOOR SYSTEM



1. SURFACE PREPARATION

- On concrete, apply SX0 PrimeWell, or SX9 HumiGuard.
- On Glazed floor tiles, apply Neogrip.

2. NEOFILLER BASE COAT APPLICATION

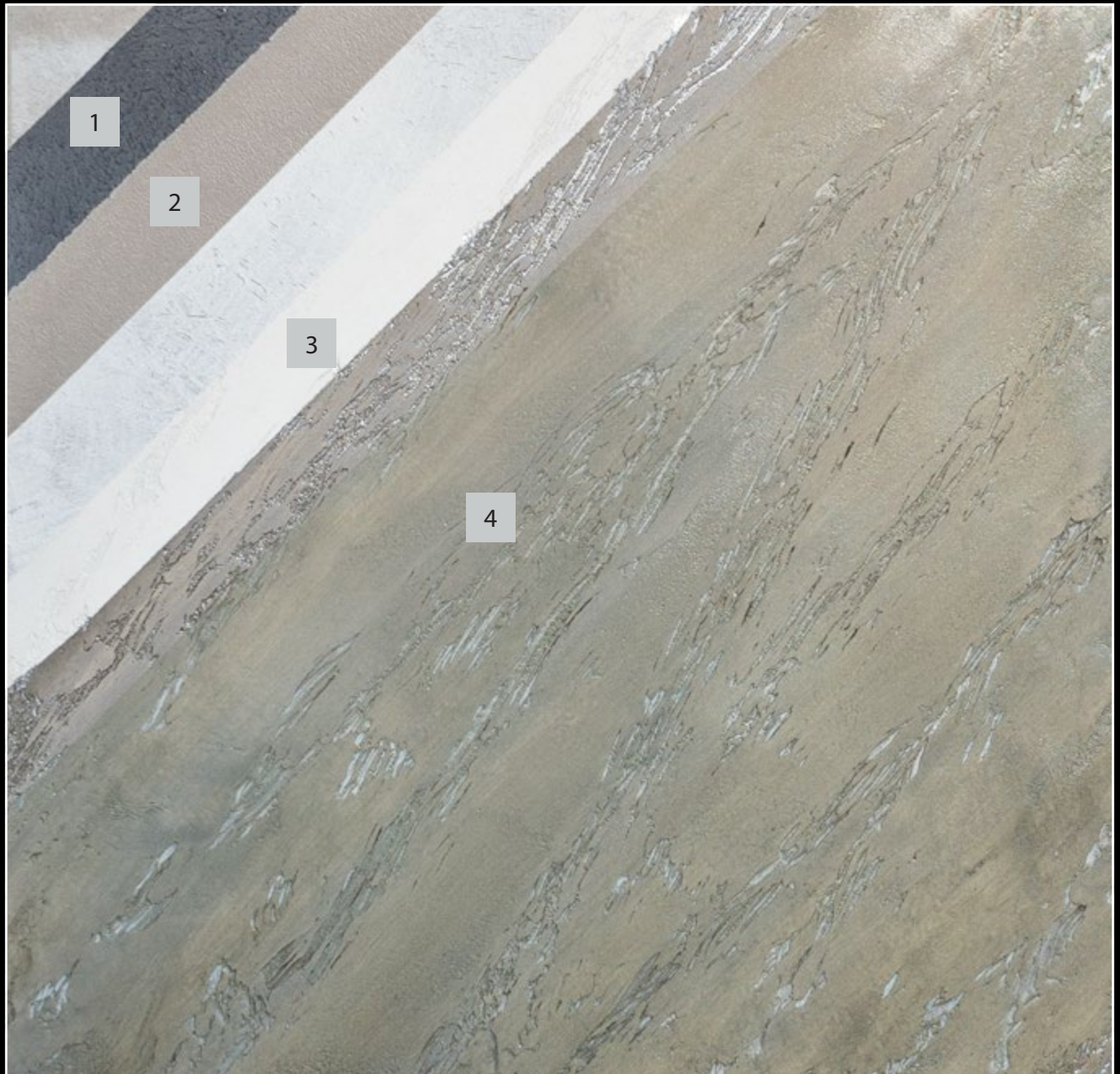
- Apply Neofiller in 2 coats and sand with a 40 grid once the surface has hardened.

3 VENATTA APPLICATION

- Apply in two coats. While the second coat is still wet, create the Marble stone veins in the surface.

4. PROTECTIVE COAT APPLICATION

- Apply Carrolux liquid or gel depending on the desired effect.



CARROLUX[®]

PROTECTIVE TOP COATS

Venatta can be top coated with Carrolux, a transparent top coat specifically engineered for performance in wet areas and to achieve glass-like layered glossy finishes. Carrolux is available in two versions:

Carrolux Gel — best for trowel application and thick coats application leaving a “glass” layer effect.

Carrolux Liquid — for spray application that will respect the rugged stone texture tactile feel.

IMPORTANT NOTICE

The application of Carrolux will cause a shift in color tonality and intensity, most notably when applied on light colors finishes.

1. WITHOUT CARROLUX



2. WITH CARROLUX





www.colortek.eu
info@colortek.eu



**Synergy, Added Value, Continuous Improvement,
Diversity, Integrity, Social Responsibility.**